

## Raindance S

### Overhead shower 300 1jet with ceiling connector

Surfaces: **Chrome** Article Number: **27494000**



#### Description

##### product features

- consists of: overhead shower, ceiling connector
- shower head size: 300 mm
- spray type: RainAir
- ball-joint: overhead shower angle adjustable
- material spray disc: metal
- ceiling connection length: 100 mm
- maximum flow rate at 3 bar: 20 l/min
- flow rate RainAir spray (at 3 bar): 20 l/min
- minimum flow pressure: 1,5 bar
- spray disc removable for cleaning
- installation: ceiling
- connection thread G ½
- connection dimension: DN15
- suitable for continuous flow water heaters

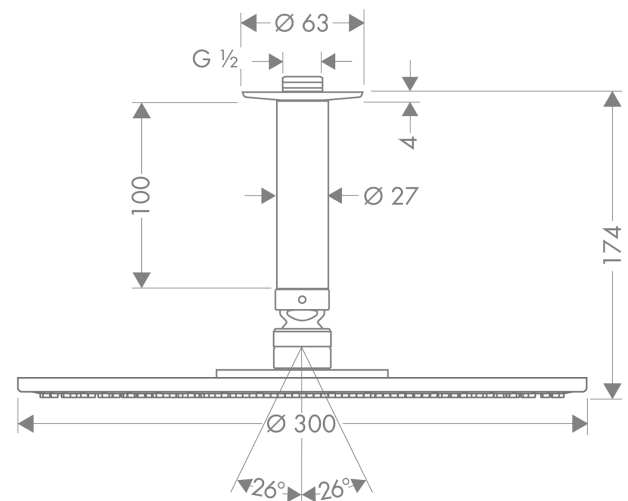
#### Technology



#### Product image



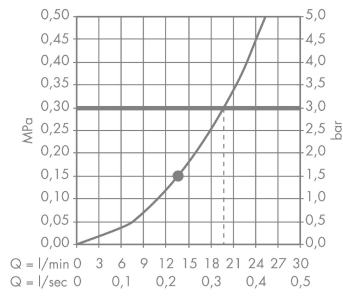
#### Scale drawing



**Raindance S**  
**Overhead shower 300 1jet with ceiling connector**  
 Surfaces: **Chrome** Article Number: **27494000**



**Flowchart**



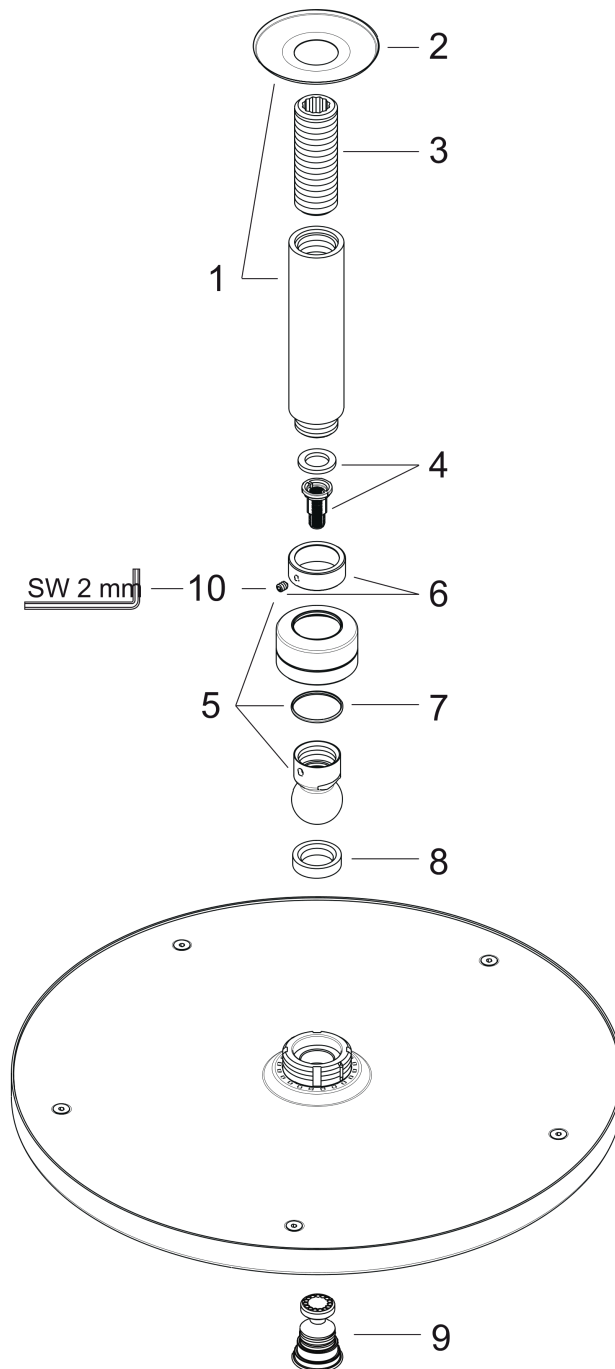
The consumption was measured in combination with the appropriate fittings (thermostat/mixer/in-wall valve) to reflect actual application in practice.

**Raindance S**  
**Overhead shower 300 1jet with ceiling connector**  
 Surfaces: **Chrome** Article Number: **27494000**



**Exploded Drawing**

Year of production: >09/08



**Raindance S**  
**Overhead shower 300 1jet with ceiling connector**  
 Surfaces: **Chrome** Article Number: **27494000**



## Spare part list

Year of production: >09/08

Pos.	Description	Article Number	Price	PU
1	shower arm	27479000	-	1
2	escutcheon	97734000	€ 8,45	1
3	connecting thread	95188000	€ 28,20	1
4	filter insert	97708000	€ 5,24	1
5	ball joint	98941000	€ 35,94	1
6	lock washer	98942000	€ 18,33	1
7	lever collar	97536000	€ 5,24	1
8	seal	94602000	€ 8,45	1
9	air jet	95794000	€ 28,20	1
10	hollow set screw M4x6	97767000	€ 3,21	1
a	non return valve	95699000	€ 13,92	1