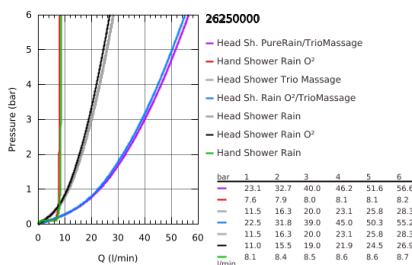
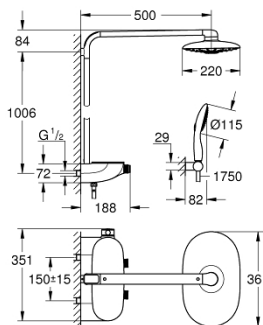


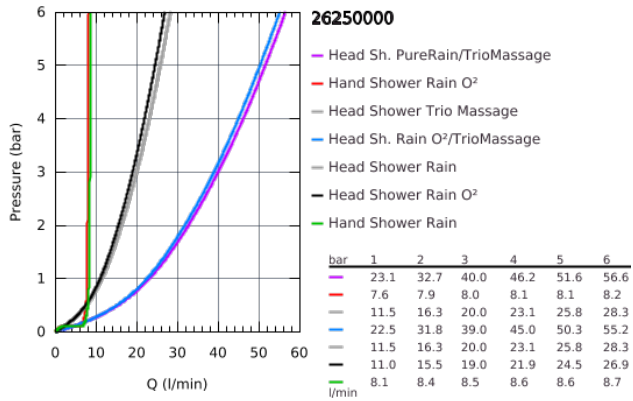
## 26 250 000 RAINSHOWER SMARTCONTROL SHOWER SYSTEM WITH THERMOSTAT FOR WALL MOUNTING



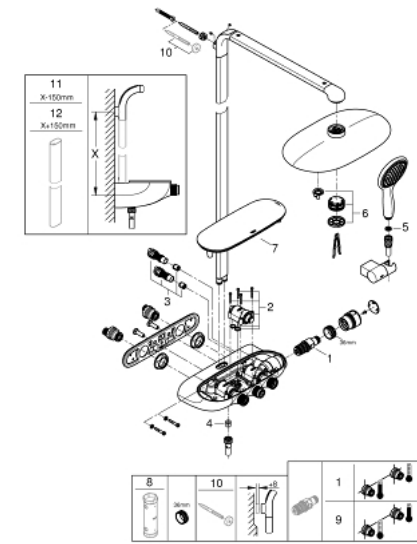
### PRODUCT DESCRIPTION

- Consisting of:
  - horizontal 500 mm shower arm
  - exposed SmartControl thermostat
  - allows change between:
    - head shower Rainshower Duo 360, spray plate chrome
    - GROHE PureRain/GROHE Rain O2 spray\* and TrioMassage
    - hand shower Power&Soul 115, spray plate white (27 671 LS0)
    - hand shower wall holder (27 055)
  - Silverflex shower hose 1750 mm (28 388 000)
- **min. recommended pressure 1.5 bar**
- **GROHE DreamSpray** perfect spray pattern
- **GROHE StarLight** chrome finish
- **GROHE CoolTouch** prevents scalding on hot surfaces
- **GROHE TurboStat** compact cartridge with wax thermoelement
- **GROHE EcoJoy** technology for less water and perfect flow
- **GROHE SafeStop** safety button at 38°C
  - ( calibration required )
  - **GROHE SafeStop Plus** optional temperature limiter at 43°C included
- **GROHE SmartControl** push for ON-OFF, turn for volume adjustment from EcoJoy to full flow
- **GROHE EasyReach** shower tray
- **SpeedClean** anti-limescale system
- **Inner WaterGuide** for a longer life
- suitable for instantaneous heaters from 18 kW/h
- **Twistfree** preventing the hose from twisting
- \* to be decided during initial installation; factory default setting: GROHE PureRain

## 26 250 000 RAINSHOWER SMARTCONTROL SHOWER SYSTEM WITH THERMOSTAT FOR WALL MOUNTING



## 26 250 000 RAINSHOWER SMARTCONTROL SHOWER SYSTEM WITH THERMOSTAT FOR WALL MOUNTING



### SPARE PARTS, October 2018 – now

- 1: Thermostatic compact cartridge 1/2" (Order-nr. 47439000)
  - 2: Cartridge (Order-nr. 48297000)
  - 3: Non-return valve (Order-nr. 4901000M)
  - 4: Non-return valve (Order-nr. 08565000)
  - 5: Strainer (Order-nr. 0700200M)
  - 6: Spray face (Order-nr. 48348000)
  - 7: cover (Order-nr. 48482000)
  - 8: Socket Spanner (Order-nr. 49059000)\*
  - 9: GROHE TurboStat cartridge 1/2" (Order-nr. 47175000)\*
  - 10: Spacer (Order-nr. 26385000)\*
  - 11: Shower system pipe for retrofitting (Order-nr. 48349000)\*
  - 12: Shower system pipe for retrofitting (Order-nr. 48350000)\*
- \* Optional accessories